



## Pressure Control Equipment

### Phuel Wet Centre Reels



Phuel have designed & created the first  
**All Stainless Steel full-bore Wet Centre Reels**

The Phuel Reels have been incorporated successfully into both new and existing Pressure Control Units and provide continuous fluid supply from one or multiple connections.

Three distinct versions are available:

#### **Incorporated Air or Hydraulic Motor**

A compact stainless steel air or hydraulic motor is built into the reel hub ensuring the maximum hose capacity within the smallest footprint.

The air motor provides a safe torque that can spool the hose but still be stopped (motor stalled) by gripping down on the hose.

#### **Selective Air Driven**

To further reduce the footprint we can supply a version in which the air motor is mounted on a separate support plate and can be inserted into the chosen reel to create drive.

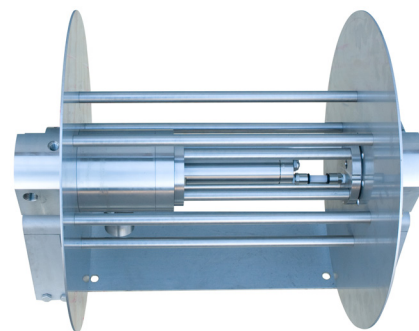
This not only offers the same safe operation but if supplied with the foot pedal control option also leaves both hands free for spooling the hose.

#### **Manual Driven**

This final version includes a sealed right angled beveled gearbox to allow the reels to be spooled by means of a hand operated crank.



Hydraulic Motor reels within  
Phuel Pressure Control Unit

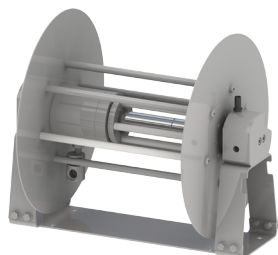


All three versions have **full ATEX certification to zone one**, are supplied with full operational details for easy incorporation into your final doc pack



# Pressure Control Equipment

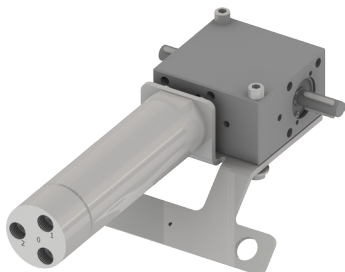
## Phuel Wet Centre Reels



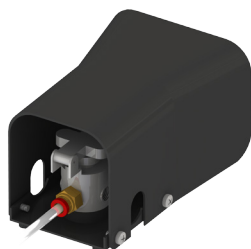
Compact wet centre reel with integral air motor



Wet centre reel with external hydraulic drive



Air Motor with Bi Directional gearbox to allow for reels to be mounted in a confined space



Foot pedal to allow both hands free to carry out spooling process

### Technical Data

(Integral Motor)

	Selective	Manual	Single	Triple
Working Temperature	-18 °C to 121 °C	-18 °C to 121 °C	-18 °C to 121 °C	-18 °C to 121 °C
Connection	BSP, Autoclave	BSP, Autoclave	-	-
Weight with hose	-	-	156 lbs	187 lbs
Weight without hose	74 lbs	75 lbs	96 lbs	103 lbs
Air Consumption	19 SCFM	N/A	19 SCFM	19 SCFM