



Pressure Control Equipment

Phuel Cross Over



Quick Union to Flange Cross Over with protector

Cross overs are sections of tubing with different top and bottom connections to allow for two types of connection to be linked.

With the hugely diverse selection of connections in the industry the need to cross over to between sizes or types is always a possibility.

Phuel can offer these sections in all sizes on request, both quick union and flanged, and can also offer more specialised parts including but not exclusively EUE, hammer lug unions and premium threads such as VAM.

The length of each cross over is dependent on the size of connections at each end, however they can be created longer than the minimum size if a desired length is needed.

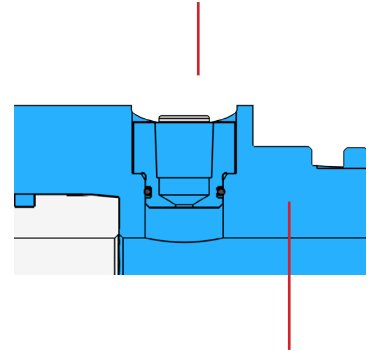
Extended cross overs can be a practical way of reducing rig height by including the connection size change within the length of a riser for example.

In the case of VAM cross overs added length can allow for recuts to extend the service life. Along with all the different connection sizes there is also the option of a quick test facility if desired which is either a one piece body cross over with two O-rings on the bottom connection or a two piece body assembly that splits in the middle.

Some of the larger connections sizes like the 15 -2 ACME quick union come with a fast test feature as standard along with spring seals.

Saver Sub

Metal sealing valve isolates the test port when not in use



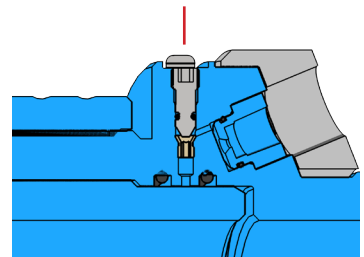
Removable Saver Sub allows a worn thread to be easily replaced

The Phuel Saver Sub provides the pressure test connection, and can be easily removed and replaced without the need to change the bottom sub. This ensures that the tool **stays in service longer.**

Isolated Test Port

Sealing Valve isolates the test port when not in use.

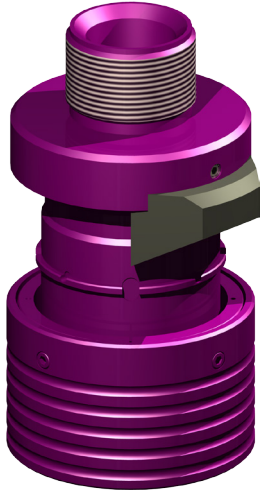
Phuel removable PEEK seat safeguards & prolongs the life of the Valve Stem





Pressure Control Equipment

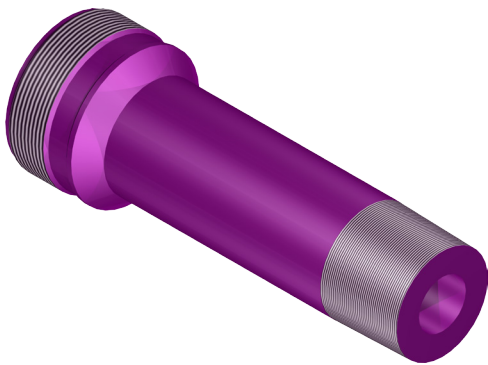
Phuel Cross Over



Quick Test Cross Over



Quick Union Cross Over



Quick Union to Premium Thread Cross Over

Product Options

- End connections and bore diameter as specified
- Working Pressures up to 10,000 psi

Key Ordering Information

Things to consider when requesting a quotation:

- End connections and side connections
- Working Pressure
- Working Temperature
- Ram Configuration